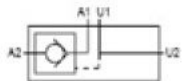


## The check valve controlled by WG DIN 2353



Name	Gwint BSP	Przepływ	Ciśnienie
VRSE01A	1/4"	20 L/MIN	350
VRSE015A	3/8"	20 L/MIN	350
VRSE02A	3/8"	50 L/MIN	350
VRSE025A	1/2"	50 L/MIN	300
VRSE03A	1/2"	80 L/MIN	300